



POLISHED VENETIAN PLASTER

STUCCO A SPECCHIO - MIRROR EFFECT STUCCO - ESTUCO EFECTO ESPEJO



MULTI-SHADE EFFECTS



MULTI-SHADE EFFECTS



LAVA + STENCIL TECHNIQUE



**THE BEAUTY
OF LIVING
YOUR HOME!**






POLISHED VENETIAN PLASTER

STUCCO A SPECCHIO - MIRROR EFFECT STUCCO - ESTUCO EFECTO ESPEJO



 **LAVA** Mirror effect stucco.

Coating of hydrated lime (aged 36 months) and marble powder, formulated with inorganic pigments, special additives and inert mineral fillers. The product is resistant to ultraviolet rays and mildew.

Areas of application: Suitable for use on old or modern artistically interesting buildings. The product can be used for interior and exterior coatings.

Application tools: Stainless steel trowel. Product dilution. Ready to use. For special needs add water. Drying time. At 68 ° F Dust free 2-4 hours, dry 8 hours.

Preparation of the surface: Prepare the surface with powder or paste stucco. After about 12 hours from the end of the application deal with abrasive papers: we recommend a grain type P120-150. Apply a fixative (Fissacril according to the surface) diluted with water in the ratio 1: 2-1: 4. For smooth/clean walls apply a coat of PRIMALAVA FINE GRAIN by using a brush or roller shaved. For walls where it is necessary a higher thickness apply one coat of PRIMALAVA LARGE GRAIN and then 1 or 2 coats of PRIMALAVA RASANTE. When the product is dry apply 3 coats of LAVA STUCCO A SPECCHIO with 6-8 hours between the 2 coats overlapping the strokes until the completion of the wall. For a mirror effect it is recommended to polish LAVA while still wet using a stainless steel trowel moving it in different directions. To obtain a water-repellent effect, after 2-3 days it is possible to pass a wax (LAVA WAX) by means of a soft cloth.

Theoretical yield: for smooth walls 32.29 ft²/ kg. For walls with irregular surfaces 21.53 ft²/ kg. Toxicological data. The product is free of solvents and toxic substances. For more information ask for toxicological data sheet and safety.



LAVA Estuco efecto espejo. Revestimiento de cal hidratada (36 meses de edad) y polvo de mármol, formulado con pigmentos inorgánicos, aditivos especiales y cargas minerales inertes. El producto es resistente a los rayos ultravioleta y al moho.

Áreas de aplicación: Adecuado para su uso en edificios antiguos o modernos artísticamente interesantes. El producto se puede utilizar para revestimientos interiores y exteriores.

Herramientas de aplicación: llana de acero inoxidable. Dilución del producto. Listo para usar. Para necesidades especiales agregue agua. Tiempo de secado. A 68° F Libre de polvo 2-4 horas, secado 8 horas.

Preparación de la superficie: Preparar la superficie con estuco en polvo o pasta. Después de aproximadamente 12 horas desde el final de la aplicación, trate con papeles abrasivos: recomendamos un tipo de grano P120-150. Aplicar un fijador (Fissacril según la superficie) diluido con agua en proporción 1:2-1:4. Para paredes lisas/limpias aplicar una capa de PRIMALAVA FINE GRAIN con brocha o rodillo rasurado. Para paredes donde sea necesario un mayor grosor aplicar una capa de PRIMALAVA GRANO GRANDE y luego 1 o 2 capas de PRIMALAVA RASANTE. Cuando el producto esté seco aplicar 3 capas de LAVA STUCCO A SPECCHIO con 6-8 horas entre 2 capas superponiendo las pasadas hasta completar la pared. Para un efecto espejo se recomienda pulir LAVA aún húmedo con una llana de acero inoxidable moviéndola en diferentes direcciones. Para obtener un efecto hidrofugante, después de 2-3 días se puede pasar una cera (LAVA WAX) mediante un paño suave.

Rendimiento teórico: para paredes lisas 32.29 ft²/kg. Para paredes con superficies irregulares 21.53 ft²/kg. Datos toxicológicos. El producto está libre de solventes y sustancias tóxicas. Para más información solicitar ficha toxicológica y de seguridad.

SPACE OF VERSATILE DESIGN

LOS AMBIENTES DE DISEÑO VERSÁTIL
GLI AMBIENTI DAL DESIGN VERSATILE





A TIMELESS DECOR FOR A RETRÒ DESIGN OF EVERGREEN ELEGANCE



UN DECOR SENZA TEMPO PER UN DESIGN
RETRÒ DALL'ELEGANZA INTRAMONTABILE

DECORACIÓN ATEMPORAL PARA UN DISEÑO
RETRO CON ELEGANCIA INTEMPORAL





CARTELLA COLORI - COLOR CHART - TABLA DE COLORES

				
A49001SX	A49013SX	A49007SX	A49031SX	A49019SX
				
A49003SX	A49015SX	A49009SX	A49058SX	A49021SX
				
A49009SX	A49111SX	A49113SX	A49057SX	A49116SX
				
A49005SX	A49017SX	A49011SX	A49033SX	A49023SX
				
A49006SX	A49018SX	A49012SX	A49059SX	A49024SX
				
A49110SX	A49112SX	A49114SX	A49115SX	A49025SX
				
A49060SX	A49040SX	A49069SX	A49037SX	A49027SX
				
A49062SX	A49072SX	A49061SX	A49038SX	A49029SX
				
A49064SX	A49073SX	A49126SX	A49129SX	A49119SX
				
A49094SX	A49083SX	A49117SX	A49048SX	A49120SX
				
A49095SX	A49082SX	A49093SX	A49081SX	A49047SX



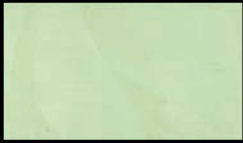
A49074SX



A49065SX



A49041SX



A49067SX



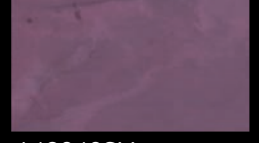
A49066SX



A49075SX



A49063SX



A49042SX



A49121SX



A49127SX



A49070SX



A49096SX



A49085SX



A49036SX



A49128SX



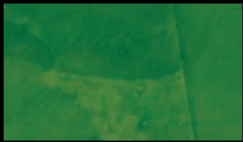
A49071SX



A49097SX



A49086SX



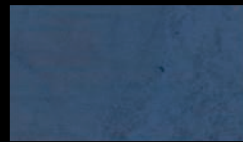
A49068SX



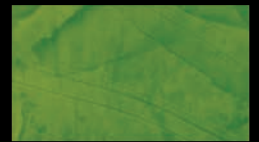
A49118SX



A49125SX



A49098SX



A49084SX



A49122SX



A49087SX



A49052SX



A49099SX



A49053SX



A49076SX



A49088SX



A49051SX



A49100SX



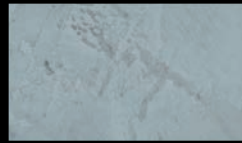
A49045SX



A49077SX



A49089SX



A49043SX



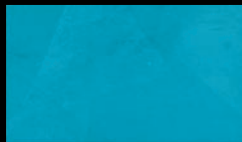
A49101SX



A49055SX



A49078SX



A49090SX



A49049SX



A49102SX



A49056SX



A49079SX



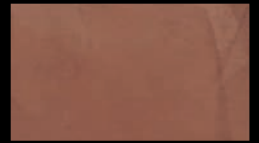
A49091SX



A49044SX



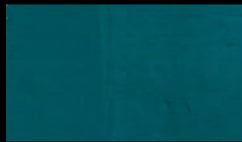
A49103SX



A49123SX



A49080SX



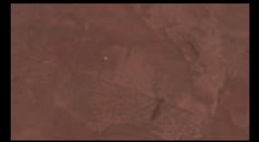
A49092SX



A49050SX



A49104SX



A49124SX



Ambience Architectural Coatings Inc.
1604 Calle Bori, San Juan
00927, Puerto Rico
Phone: 939-337-5522 939-337-5523
info@ambience-pr.com
www.ambiencearchitectural.com